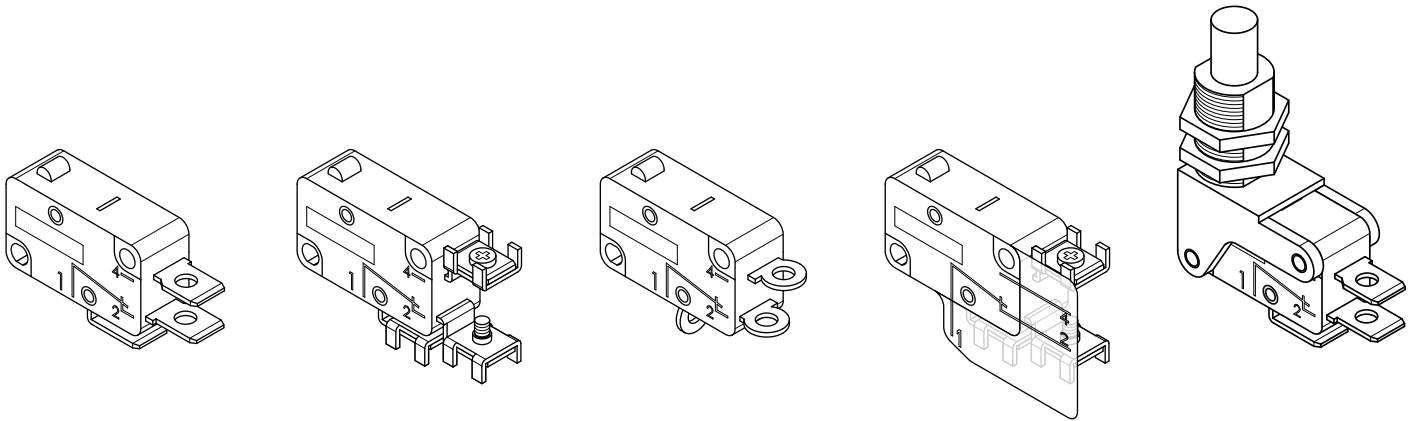




- Fast and reliable switching, independent from actuating speed.
- High electrical ratings with small dimensions.
- High repeat accuracy of switching points and forces.
- Low operating force.
- NC positive opening. \ominus
- Very long service life.
- Equipped with self cleaning switching contacts in silver alloy.
- Contacts: 1 NC + 1 NO (snap action).

MFI

MICROSWITCHES



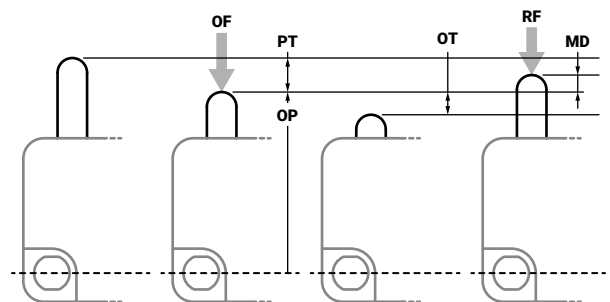
Specifications

General			
Operating temperature	-25 ... +85°C / -13 ... +185°F		
Minimum life expectancy	mechanical	1 × 10 ⁶ cycles	
	electrical	5 × 10 ⁵ cycles	
Electrical			
Rated thermal current	I _{th}	8 A	
Rated insulation voltage	U _i	250 V	
Rated impulse withstand voltage	U _{imp}	1500 V	
Rated operating current	ie	resistive load	8 A - 250 V
		inductive load	3 A - 250 V
Pollution degree	2		
Protection against electric shock	class II		



	MFI	MFI.1	MFI.2	MFI.3	MFI.4	MFI.5	MFI.6	MFI.7	-	p. 3
	MFI.S	MFI.1S	MFI.2S	MFI.3S	MFI.4S	MFI.5S	MFI.6S	MFI.7S	-	p. 4
	MFI.ST	MFI.1ST	MFI.2ST	MFI.3ST	MFI.4ST	MFI.5ST	MFI.6ST	MFI.7ST	-	p. 5
	MFI.STP	MFI.1STP	MFI.2STP	MFI.3STP	MFI.4STP	MFI.5STP	MFI.6STP	MFI.7STP	-	p. 6
	-	-	-	-	-	-	-	-	MFI.T	p. 7

OF	[N]	Operating force Force, applied to the actuator, required to operate the contacts
RF	[N]	Release force Value to which the force applied to the actuator must be reduced to allow the contacts to return to the release position and reset
PT	[mm]	Pretravel The distance or angle that the operator travels from the starting position to the operating position
OP	[mm]	Operating position Position of the actuator in which the contacts are activated with a snap action, reached when the actuating force is applied
OT	[mm]	Overtravel The distance or angle that the operator travels from the operating position to the total travel position
MD	[mm]	Differential movement The distance or angle that the operator travels from the activation position to the release position in which the reset occurs

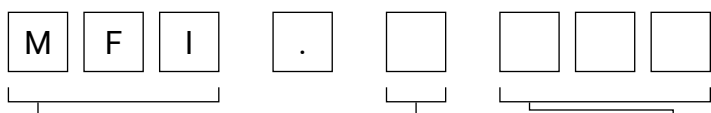


MFI

Microswitch with 6.3 × 0.8 mm faston terminal



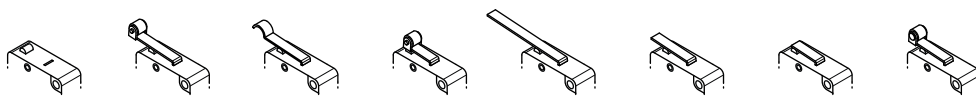
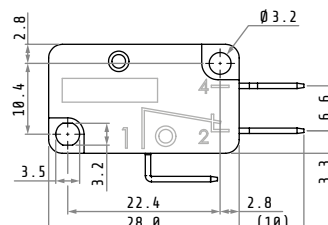
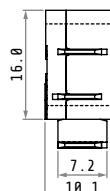
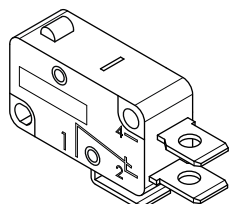
Compliance:
IEC/EN61058
UL1054



Series **Actuator** **Terminal type and other features**

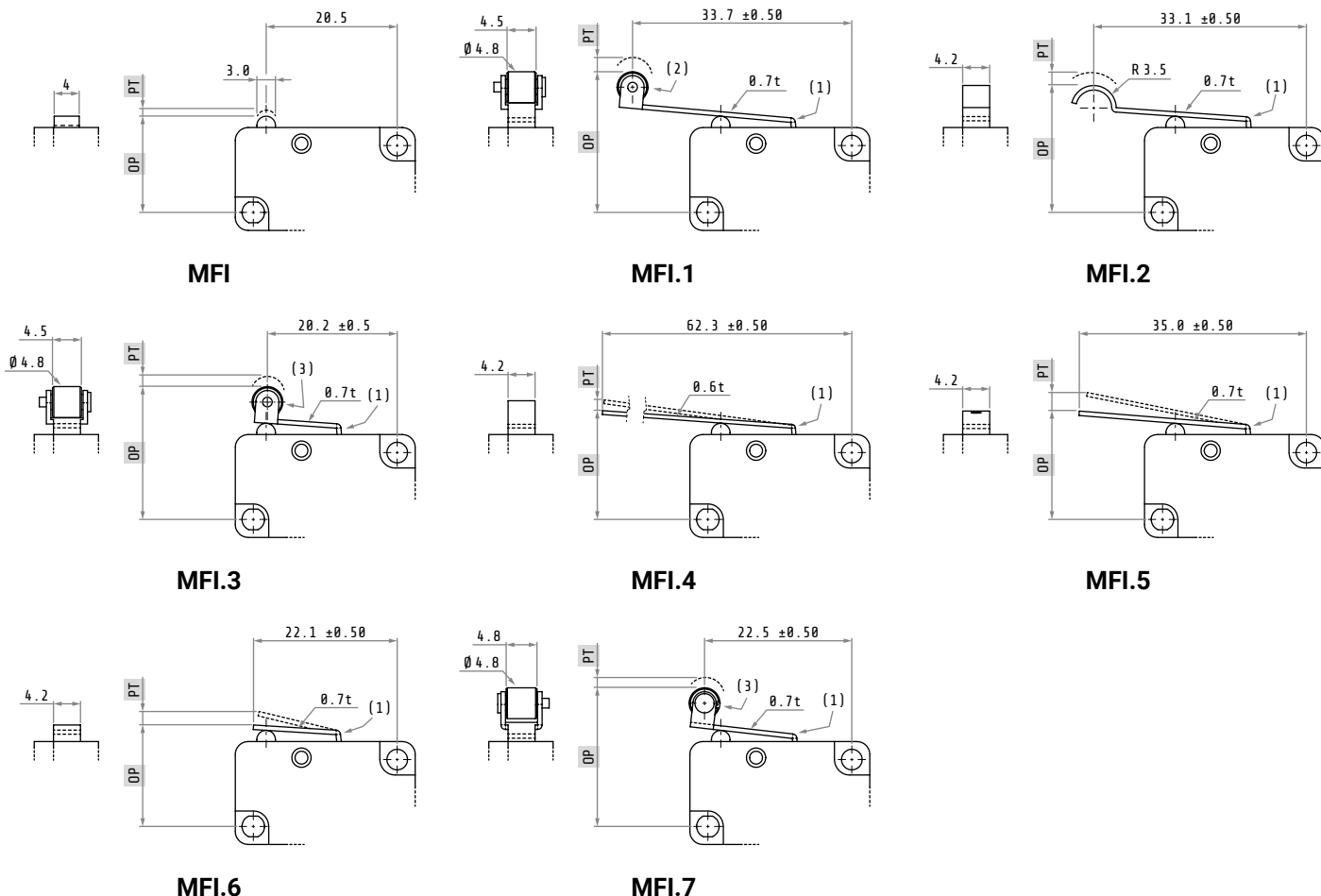
MFI microswitches

- blank pin plunger
- 1 long roller lever
- 2 simulated roller lever
- 3 roller lever
- 4 long lever
- 5 medium lever
- 6 short lever
- 7 16 mm roller lever



	MFI	MFI.1	MFI.2	MFI.3	MFI.4	MFI.5	MFI.6	MFI.7	
OF max	5.1	3.2	3.2	5.1	1.3	3.2	5.1	4.5	N
RF min	1.9	1.0	1.0	1.9	0.15	1.2	1.9	1.9	N
PT max	1.4	3.3	3.3	1.4	7.6	3.3	1.6	1.8	mm
OT min	0.8	0.8	0.8	0.6	2.2	0.8	0.6	0.8	mm
MD max	0.3	0.8	0.8	0.6	2.2	0.8	0.6	0.6	mm
OP	14.4 ±0.5	20.3 ±1.2	18.4 ±1.2	20.3 ±0.8	15.1 ±2.6	15.1 ±1.2	15.1 ±0.6	21.1 ±0.6	mm

Dimensions in mm / illustrations NOT in scale (1) Stainless steel lever (2) Plastic material roller (3) Stainless steel roller

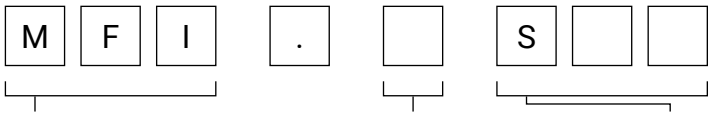


MFI.S

Microswitch with solder contact terminal



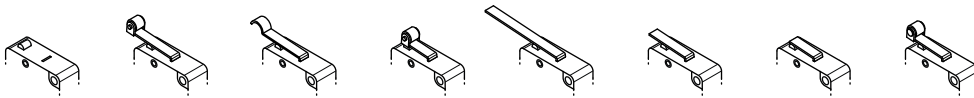
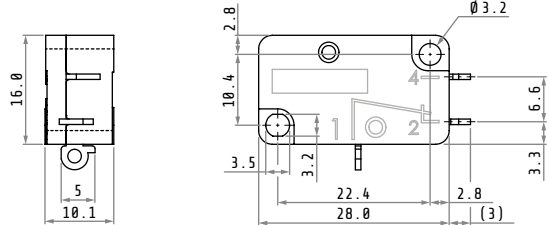
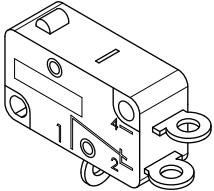
Compliance:
IEC/EN61058
UL1054



Series **Actuator** **Terminal type and other features**

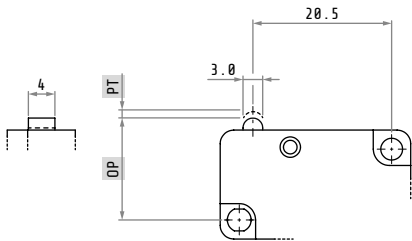
MFI microswitches

- blank pin plunger
- 1 long roller lever
- 2 simulated roller lever
- 3 roller lever
- 4 long lever
- 5 medium lever
- 6 short lever
- 7 16 mm roller lever

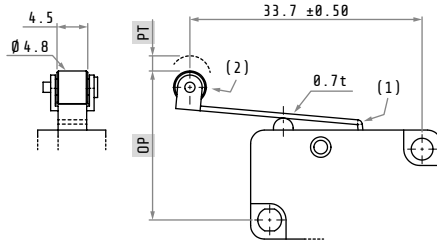


		MFI.S	MFI.1S	MFI.2S	MFI.3S	MFI.4S	MFI.5S	MFI.6S	MFI.7S	
OF	max	5.1	3.2	3.2	5.1	1.3	3.2	5.1	4.5	N
RF	min	1.9	1.0	1.0	1.9	0.15	1.2	1.9	1.9	N
PT	max	1.4	3.3	3.3	1.4	7.6	3.3	1.6	1.8	mm
OT	min	0.8	0.8	0.8	0.6	2.2	0.8	0.6	0.8	mm
MD	max	0.3	0.8	0.8	0.6	2.2	0.8	0.6	0.6	mm
OP		14.4 ±0.5	20.3 ±1.2	18.4 ±1.2	20.3 ±0.8	15.1 ±2.6	15.1 ±1.2	15.1 ±0.6	21.1 ±0.6	mm

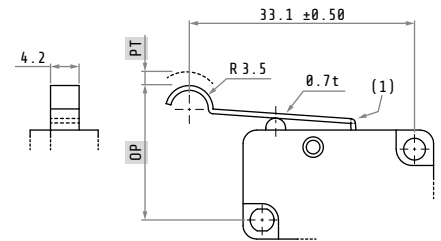
Dimensions in mm / illustrations NOT in scale (1) Stainless steel lever (2) Plastic material roller (3) Stainless steel roller



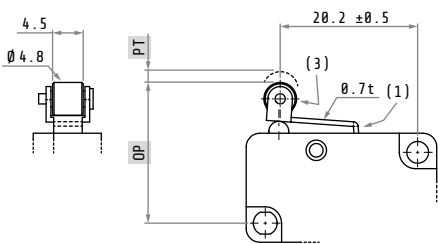
MFI.S



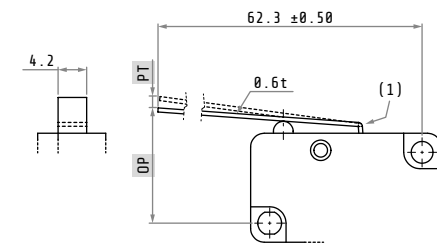
MFI.1S



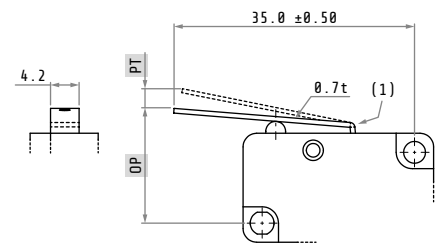
MFI.2S



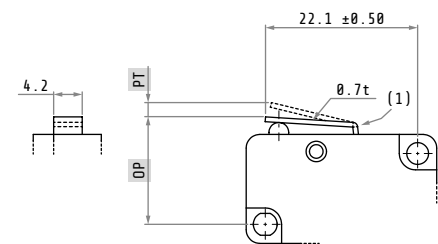
MFI.3S



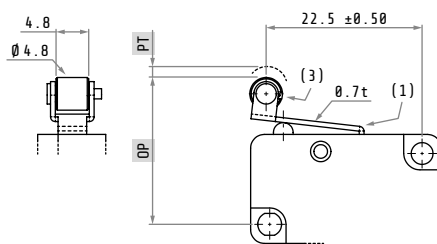
MFI.4S



MFI.5S



MFI.6S



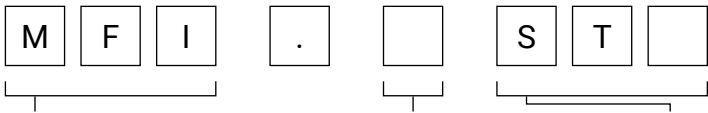
MFI.7S

MFI.ST

Microswitch with terminal with screws M3 for wire 1.5 mm²



Compliance:
IEC/EN61058
UL1054



Series

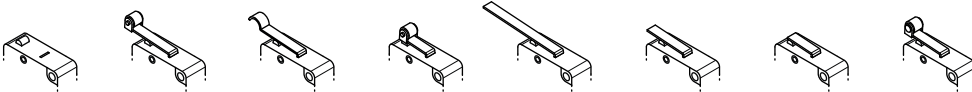
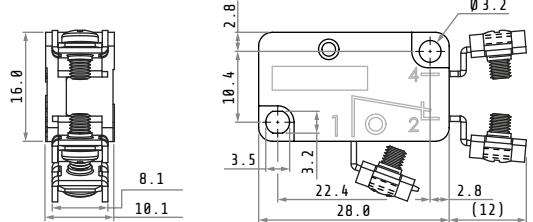
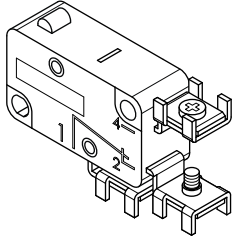
MFI microswitches

Actuator

- blank
- pin plunger
- 1 long roller lever
- 2 simulated roller lever
- 3 roller lever
- 4 long lever
- 5 medium lever
- 6 short lever
- 7 16 mm roller lever

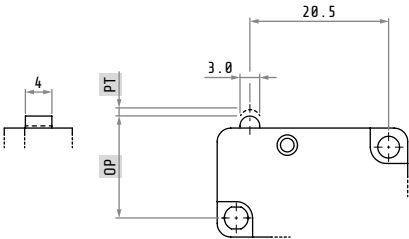
Terminal type and other features

ST screws M3 for wire 1.5 mm²

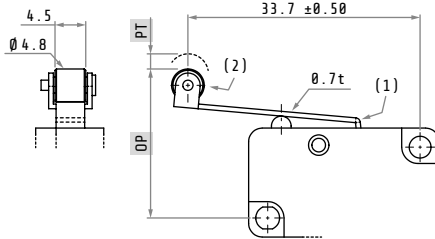


		MFI.ST	MFI.1ST	MFI.2ST	MFI.3ST	MFI.4ST	MFI.5ST	MFI.6ST	MFI.7ST	
OF	max	5.1	3.2	3.2	5.1	1.3	3.2	5.1	4.5	N
RF	min	1.9	1.0	1.0	1.9	0.15	1.2	1.9	1.9	N
PT	max	1.4	3.3	3.3	1.4	7.6	3.3	1.6	1.8	mm
OT	min	0.8	0.8	0.8	0.6	2.2	0.8	0.6	0.8	mm
MD	max	0.3	0.8	0.8	0.6	2.2	0.8	0.6	0.6	mm
OP		14.4 ±0.5	20.3 ±1.2	18.4 ±1.2	20.3 ±0.8	15.1 ±2.6	15.1 ±1.2	15.1 ±0.6	21.1 ±0.6	mm

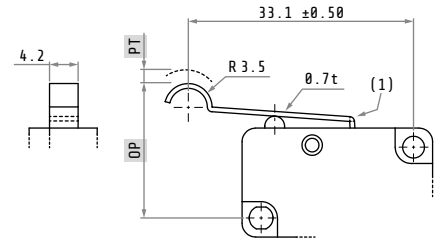
Dimensions in mm / illustrations NOT in scale (1) Stainless steel lever (2) Plastic material roller (3) Stainless steel roller



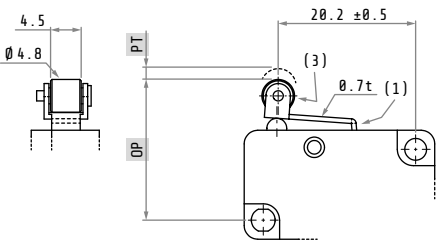
MFI.ST



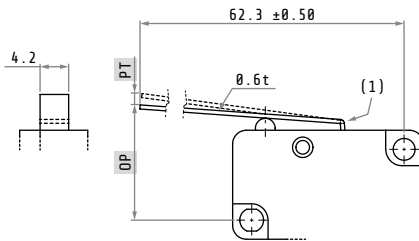
MFI.1ST



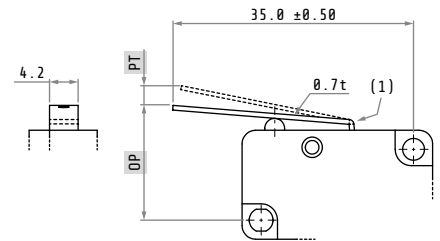
MFI.2ST



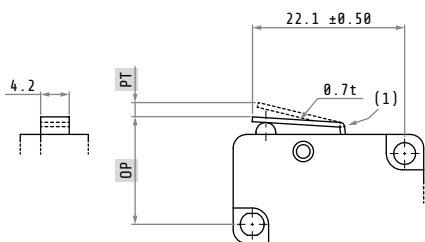
MFI.3ST



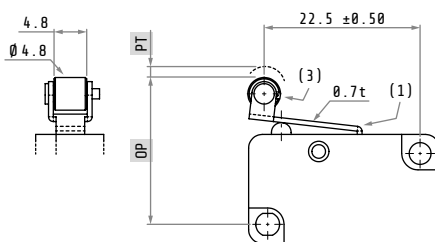
MFI.4ST



MFI.5ST



MFI.6ST



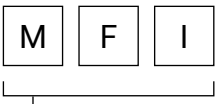
MFI.7ST

MFI.STP

Microswitch with terminals with screws M3 for wire 1.5 mm² and plate protection



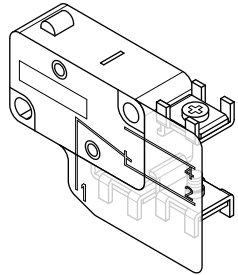
Compliance:
IEC/EN61058
UL1054



Series
MFI microswitches

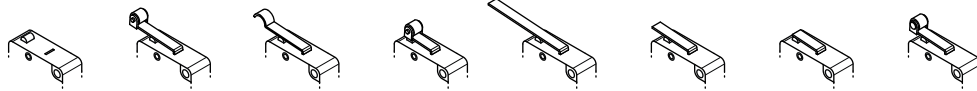
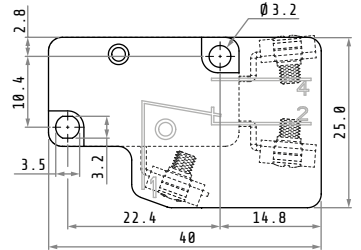
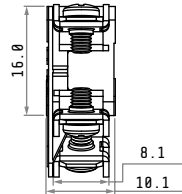
Actuator

Terminal type and other features



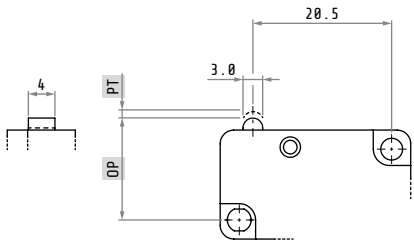
- blank pin plunger
- 1 long roller lever
- 2 simulated roller lever
- 3 roller lever
- 4 long lever
- 5 medium lever
- 6 short lever
- 7 16 mm roller lever

STP screws M3 for wire 1.5 mm² and plate protection

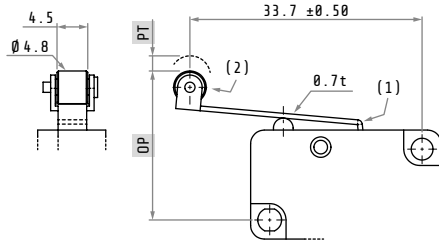


		MFI.STP	MFI.1STP	MFI.2STP	MFI.3S	MFI.4STP	MFI.5STP	MFI.6STP	MFI.7STP	
OF	max	5.1	3.2	3.2	5.1	1.3	3.2	5.1	4.5	N
RF	min	1.9	1.0	1.0	1.9	0.15	1.2	1.9	1.9	N
PT	max	1.4	3.3	3.3	1.4	7.6	3.3	1.6	1.8	mm
OT	min	0.8	0.8	0.8	0.6	2.2	0.8	0.6	0.8	mm
MD	max	0.3	0.8	0.8	0.6	2.2	0.8	0.6	0.6	mm
OP		14.4 ±0.5	20.3 ±1.2	18.4 ±1.2	20.3 ±0.8	15.1 ±2.6	15.1 ±1.2	15.1 ±0.6	21.1 ±0.6	mm

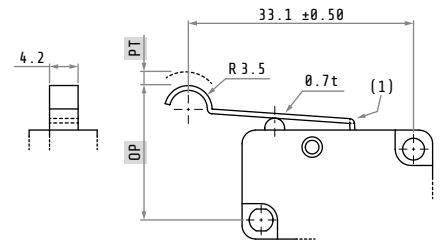
Dimensions in mm / illustrations NOT in scale (1) Stainless steel lever (2) Plastic material roller (3) Stainless steel roller



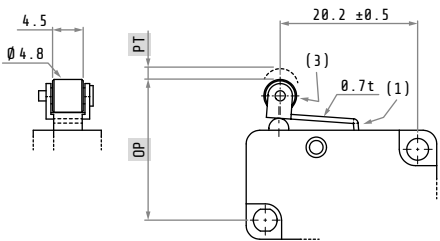
MFI.STP



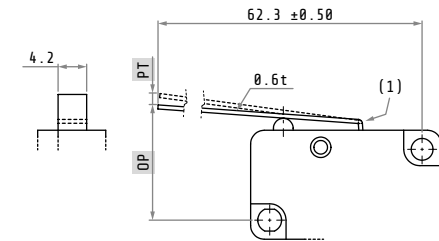
MFI.1STP



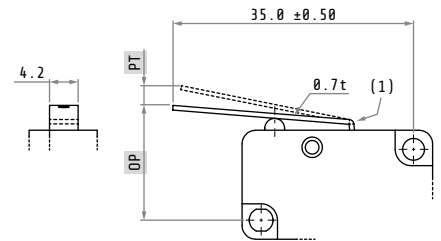
MFI.2STP



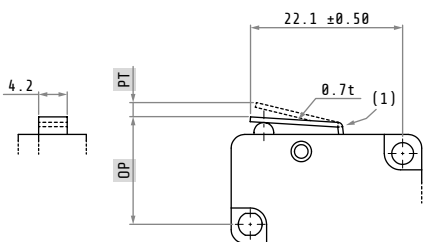
MFI.3STP



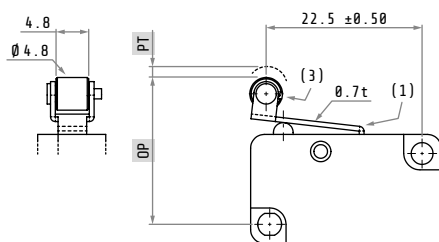
MFI.4STP



MFI.5STP



MFI.6STP

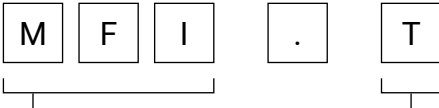


MFI.7STP

Microswitch with 6.3 × 0.8 mm faston terminals and tower actuator with threaded flange

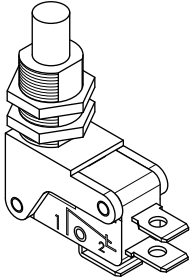


Compliance:
IEC/EN61058
UL1054



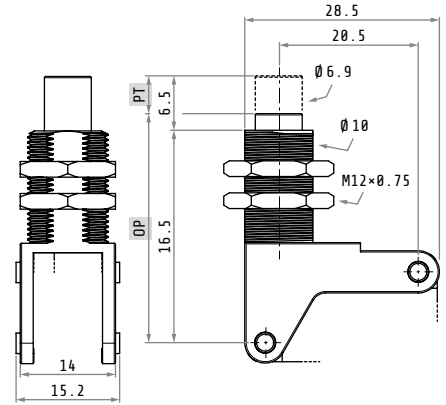
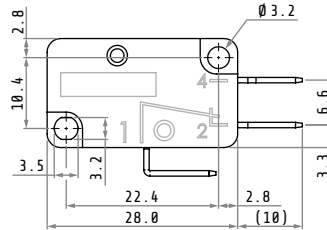
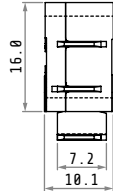
Series

MFI microswitches



Actuator

T tower actuator with threaded flange



MFI.T			
OF	max	6.0	N
RF	min	2.0	N
PT	max	2.2	mm
OT	min	3.3	mm
MD	max	0.5	mm
OP		21.2 ±0.8	mm

Dimensions in mm / illustrations NOT in scale

(1) Stainless steel lever

(2) Plastic material roller

(3) Stainless steel roller

