

Slip rings

Scudo - Prisma - Navale Series

Table of contents



TECHNO-LIFTING EQUIPMENT



20 - 50A Slip rings from 3 up to 16 rings with open frame or protection rating up to IP65.

TABLE OF CONTENTS

■ Scudo - Prisma - Navale Series Characteristic	pag. 40	■ Scudo - Prisma - Navale Series Accessories and replacement	pag. 42
■ Scudo - Prisma - Navale Series Versions	pag. 41	■ Warning horns AA Series	pag. 43

Slip rings

Scudo - Prisma - Navale Series

Characteristics

Slip rings are used to transfer electrical signal and power energy between stator and a rotor or viceversa. They are comprised of 3 or more in graphite or metal contacts, mounted on the steel shaft the brushes are all replace and are in graphite on Prisma and Navale Series in copper on Scudo Series

OPERATING TIME

The operating life of a slip ring is dependant upon the rotation speed and the dynamic stability.

CURRENT RATING

Capacity can be increasing by connecting in series or parallel two or more slip rings.

BRUSHES IN GRAPHITE

They are mainly used on low-medium speed applications. they are the most common in particular when more circuits are required as they ensure a very good connection they withstand low and high temperatures, aggressive environments with presence of chemicals and unidity.

SPEED OPERATION

Max rotation speed 20 turns 1'.

CHARACTERISTICS

SCUDO	PRISMA	NAVALE
<ul style="list-style-type: none"> Rated insulation voltage Ui 690V 	<ul style="list-style-type: none"> Rated insulation voltage Ui 690V 	<ul style="list-style-type: none"> Rated insulation voltage Ui 690V
<ul style="list-style-type: none"> Rated operating voltage Ue 500Vac 	<ul style="list-style-type: none"> Rated operating voltage Ue 500Vac 	<ul style="list-style-type: none"> Rated operating voltage Ue 500Vac
<ul style="list-style-type: none"> Rated operating current 20A. Intermittent working 30A. 	<ul style="list-style-type: none"> Rated operating current 50A 	<ul style="list-style-type: none"> Rated operating current 50A
<ul style="list-style-type: none"> Close frame version with protection rated IEC/EN60529 IP51 	<ul style="list-style-type: none"> Open frame 	<ul style="list-style-type: none"> Close frame version with protection rated IEC/EN60529 IP65
<ul style="list-style-type: none"> Modularity: from 3 up to 15 80 mm Ø rings 	<ul style="list-style-type: none"> Modularity: from 3 up to 16 100 mm Ø rings 	<ul style="list-style-type: none"> Modularity: from 3 up to 16 100 mm Ø rings
<ul style="list-style-type: none"> Cu brushes 	<ul style="list-style-type: none"> Brushes in graphite 	<ul style="list-style-type: none"> Brushes in graphite
<ul style="list-style-type: none"> 42 mm Ø shaft 	<ul style="list-style-type: none"> 51 mm Ø shaft 	<ul style="list-style-type: none"> 51 mm Ø shaft with roller bearings and O-ring
<ul style="list-style-type: none"> Pvc 147 mm Ø housing and terminals cover 		<ul style="list-style-type: none"> 280 mm Ø power coated alluminium housing with protection against aggressive environments
<ul style="list-style-type: none"> Ambient temperature: + 60° C - 30° C. 		

Slip rings

Scudo - Prisma - Navale Series

Versions

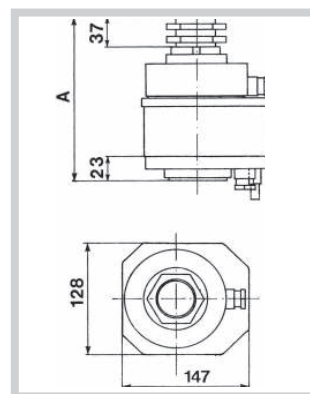


TECHNO-LIFTING EQUIPMENT

SCUDO 20A IP51 SERIE



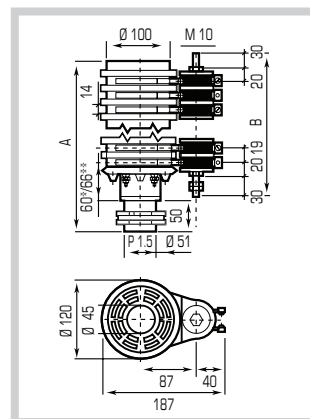
N° RINGS	CODE	DIMENSIONS A
3	30402091	180
4	30402092	195
5	30402093	210
6	30402094	225
7	30402095	240
8	30402096	255
9	30402097	270
10	30402098	285
11	30402099	300
12	30402100	315
13	30402101	330
14	30402102	345
15	30402103	360



PRISMA 50A IPOO SERIE



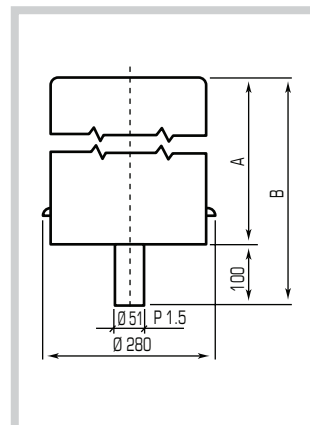
N° RINGS	CODE	DIM. A	DIM. B
3	30402037	170	143
4	30402038	190	162
5	30402039	210	181
6	30402040	230	200
7	30402041	250	219
8	30402042	270	238
9	30402043	290	257
10	30402044	310	276
11	30402045	330	295
12	30402046	350	314
13	30402047	370	333
14	30402048	390	352
15	30402049	410	371
16	30402050	430	390



NAVALE 50A IP65 SERIE



N° RINGS	CODE	DIM. A	DIM. B
3	30403001	265	375
4	30403002		
5	30403003		
6	30403004		
7	30403005		
8	30403006		
9	30403007		
10	30403008		
11	30403009	470	570
12	30403010		
13	30403011		
14	30403012		
15	30403013		
16	30403014		

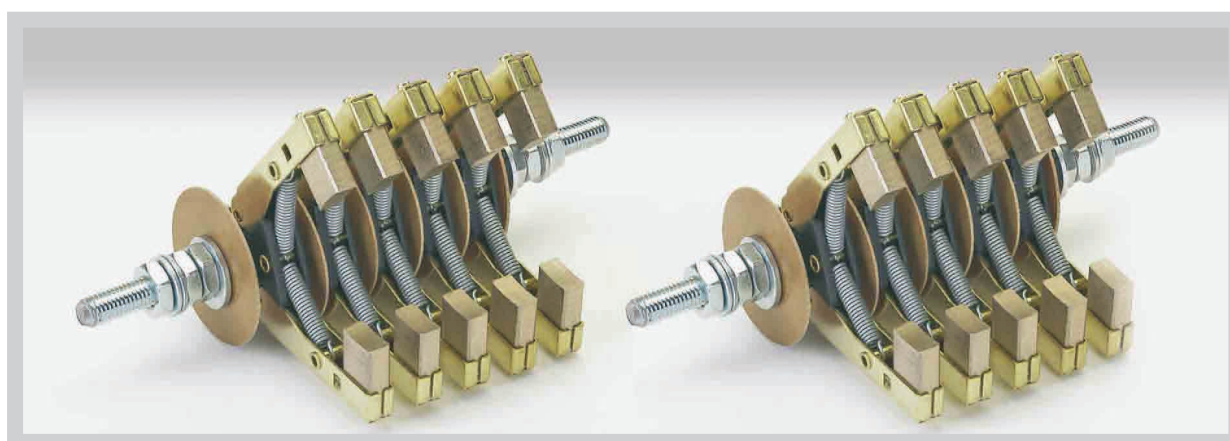


Slip rings

Scudo - Prisma - Navale Series

Accessories and spare parts

SPARE SPARTS PRISMA - NAVAL SERIES



BRUSHES GROUP IN GRAPHITE

■ Ø 100 Yellow isolator	11702001	■ 6 - Rings collectors	12202017
■ Brush isolator	11702004	■ 7 - Rings collectors	12202018
■ Collectors terminal	11702005	■ 8 - Rings collectors	12202019
■ 16 - Holes cable entry head	11708056	■ 9 - Rings collectors	12202020
■ Single brushes	12202033	■ 10 - Rings collectors	12202021
■ Charcoal-crayon for brushes	12202034	■ 11 - Rings collectors	12202022
■ Aluminium hexagon	21005005	■ 12 - Rings collectors	12202023
■ Aluminium fixing flange	21005007	■ 13 - Rings collectors	12202024
■ Ø 100 brass ring	21005010	■ 14 - Rings collectors	12202025
■ 3 - Rings collectors	12202015	■ 15 - Rings collectors	12202027
■ 4 - Rings collectors	12202016	■ 16 - Rings collectors	12202028
■ 5 - Rings collectors	12202026		